

# RV HEAVEN'S PARK EMERGENCY RESPONSE PLAN: A CRUCIAL GUIDE FOR YOUR SAFETY



**Address:** 12046 Township Rd 422, (Parkland Drive)

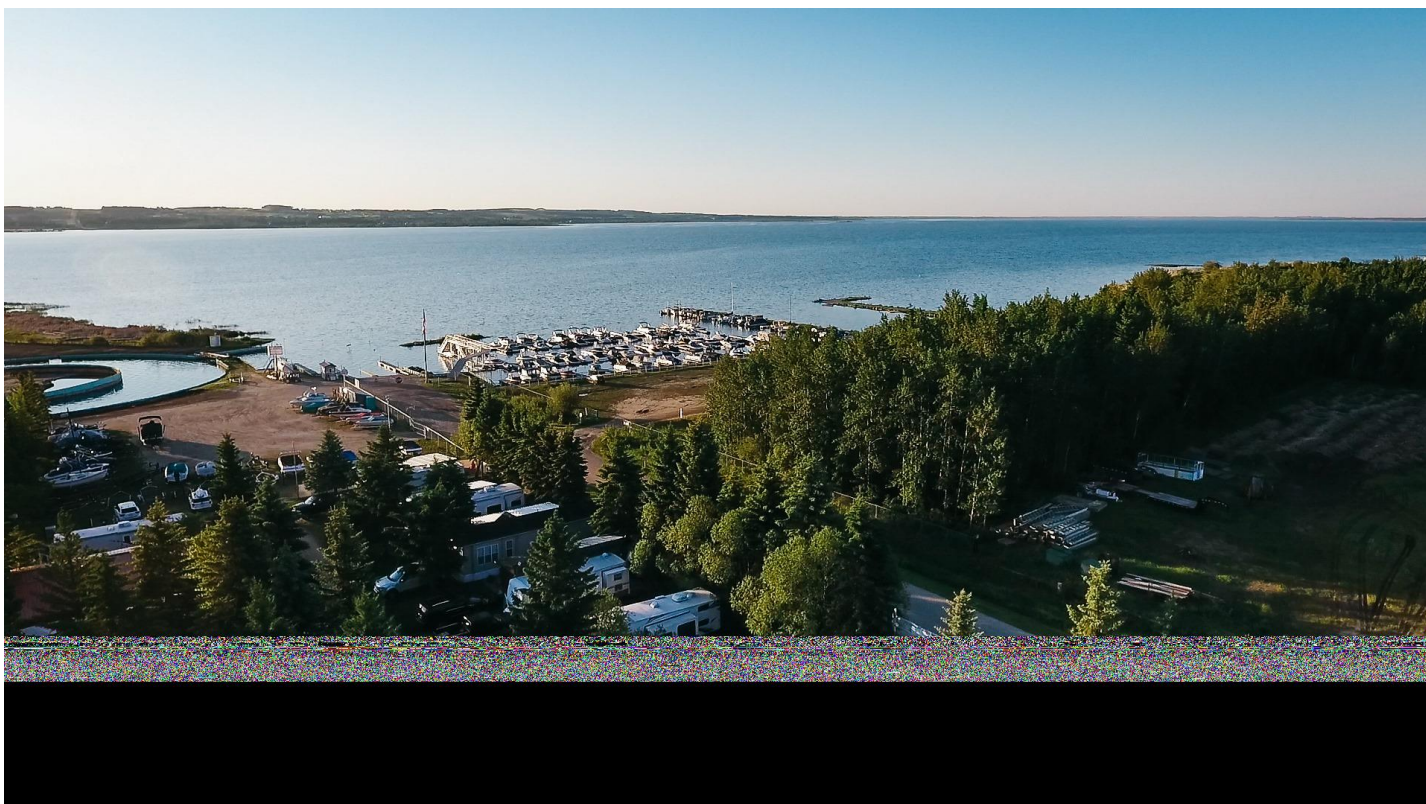
Northwest corner of Gull Lake

**Phone:** (1-403) 510-4782 (Park Manager) or (1-403) 843-3888 (Marina)

(Revision 2) May 15, 2024

Created by Kara Ferguson

Approved by RV Heaven's Park Condominium Corporation (August 2020)



*The following items are included in a park's emergency preparedness:*

- Evacuation Route - Exit by the main entrance of each pod.
- Description of Procedures - A description of how the park will be evacuated and how each resident will be notified of an evacuation.
- Common Disasters & Procedures for Responding to Each—This section provides detailed and comprehensive procedures for the types of disasters common to the area, such as floods, fires, tornadoes, and high winds, ensuring that you are well-prepared for any eventuality.
- Individual Emergency Plan for Owners & Guests of RV Heaven - This section provides detailed information on how residents may obtain additional materials for establishing a separate emergency plan, emergency supply kits, and individual safety recommendations, all tailored to your specific needs.
- Local Emergency & Contact Information - This section provides crucial contact information for emergency government agencies, including the Alberta Emergency Management Agency (AEMA), local fire and police departments, and community assistance organizations such as the Canadian Red Cross, Salvation Army, or other emergency agencies. It also includes details on public warning signals used in the community and the regional emergency broadcast station frequency location.

## Emergency Preparedness Plan RV Heaven Park

### Overview

At RV Heaven, your safety is our top priority. This Emergency Preparedness and Response Plan is a comprehensive guide, offering logical and safe steps to take in the event of an emergency. It's designed to assist owners and visitors, ensuring your safety while residing at or visiting RV Heaven.

This plan will be posted to the RV Heaven website and available upon request to all Owners/ Residents who may lease a lot, either short—or long-term, as well as visitors.

Safety is our number one priority. Please remember to act wisely and maintain your personal safety and the personal safety of your family and guests while on site.

For all emergencies, you may contact the onsite Park Manager at (1403-510-4782) or Cell (1403-510-4782) or dial 911. If you dial 911, remain calm and provide the dispatcher with all pertinent information. Be sure to include your name, location, site number, the nature of the emergency, type of injury, number of injured, and any other information you may be requested to provide. Wait to hang up until instructed by the dispatcher to do so.

Please note that RV Heaven's Owner/ Management /response team is not responsible for physically evacuating residents or guests from their on-site locations or for providing any materials or services during an emergency.



### RV Heaven Exit Plan

1. All Unit Owners and Visitors will exit the area via the (Main Entrances) of each pod. The gate will remain open until all are evacuated.
2. If the emergency warrants it, a horn or megaphone will be utilized to inform/update the public about the nature of the emergency and the appropriate response.
3. The Park Manager and support staff are not responsible for removing persons or personal property from the emergency area. Everyone's cooperation is appreciated.

### All Emergencies:

If the Emergency involves injury to an individual or multiple individuals or the possibility of injury, please **contact 911 IMMEDIATELY** and then notify Condominium Corporation No 0725732 "RV Heaven" Park Manager.

Life-Threatening Emergencies Call 911

RCMP - 911

Ambulance - 911

Fire – 911

### RV Heaven Condo Corp contact numbers:

- Park Manager - Mona Thomas      Cell (1-403)510-4782
- President- Evelyn Harrod          Cell (1-647) 231-5659
- Marina - Wayne Danser            Cell (1-403) 704-0339
- Marina - John Porter                Cell (1-403) 620-9707

Please do not block the roadway when entering or exiting the facility. If Emergency Vehicles are incoming, please pull to the side of the roadway and allow the vehicle(s) to pass.

It is assumed that RVs and tent camping vehicles located at sites on the south end of the park would evacuate first, as these sites are closest to the main gate. The remaining sites would soon follow, exiting in an orderly fashion. However, in isolated emergencies, such as a single RV or boat fire, only the persons and RVs or boats closest to the isolated emergency should evacuate to an alternate location within the park as designated by Park Management or the Fire Chief or Assistant Fire Chief on scene.

Please ONLY use the designated roadway to evacuate the park area.

Park Management is usually notified at least 24 hours in advance of potential storms.

If severe weather is possible, all campers and guests on-site will be notified as soon as possible.

In the event the primary evacuation route is blocked, a secondary exit located at the North end will provide an alternate evacuation route on authorization of the Park Manager

Depending upon the nature of the emergency, Park occupants and guests may be directed to gather at the beach area.

All RVs/Park models must maintain their mobility functions for quick evacuation in an emergency. In the event of an emergency requiring evacuation, leave all equipment, including unattached RVs, and exit the park in an orderly manner.

Always maintain personal safety.

***SAFETY  
MATTERS***

### Description of Evacuation Procedures Unit Owners/ Guests

The Park Condominium Corporation is a part of the Disaster Preparedness Emergency Plan Team. This volunteer team, under the leadership of the park response team leader, will assist with the following functions:

- If any impending disaster is known, inform each guest. Notice shall be verbal if possible or by public address using a park megaphone.
- Suppose Park Management knows of any special needs for fragile, disabled, elderly or disabled individuals within the facility. In that case, staff will try to assist these individuals to the best of their abilities in the situation. However, it is each person's responsibility to care for themselves in all cases. We do not advise waiting for the response team to arrive to assist in an emergency of a disabled person, especially if the disabled person has the assistance of family, friends, or onsite care/assistance personnel to help the disabled, elderly or disabled individual. Furthermore, family, friends, or on-site care personnel are expected to respond appropriately to any emergency.
- Before any evacuation, it is advised that all propane devices be isolated and shut off, all electrical and water hookups be disconnected, all doors, windows, and property located outside your unit be secured, and all property is left immediately at the predetermined location.
- Park management is NOT responsible for transporting campground guests and RVs. The most current contact information for local taxi and towing services will be posted at the office so guests can make contact and arrange transport as needed.
- In the event of possible harm to persons in an emergency, Park Management will use its best judgment to assist in transporting persons only (no personal property) off-site to a safer location if available.
- Unit owners or others on-site who may need special assistance, such as the disabled or immobile elderly persons, should advise Park Management that they are on-site whenever in the park so the staff will make special efforts to contact and assist them in an emergency. Remember that Park Management or Staff/Condo Board Members are not responsible for physically evacuating residents from their RVs or providing any materials or services during an emergency. However, the Park response team will do all they can to help in the emergency, particularly by transporting disabled or immobile persons to a location away from the emergency or disaster area, if possible. All unit owners, families and guests should have their emergency evacuation plans known to each member of the family and any guest(s) on-site visiting the unit owner.



**Fire** - You can take steps to minimize the dangers associated with fires and improve your chances of survival should a fire erupt in or around your RV, Park Model or park.

Safety Tips:

- Be sure you have correctly operating smoke detectors and fire extinguishers. If one or more of your smoke detectors is battery operated, replace the batteries annually or more often if necessary. An easy-to-remember schedule is to change your batteries to coincide with opening day at the park.
- Make sure everyone knows how to use the emergency exits in your RV. Practice using them with the whole family.
- Be sure your heating and electrical systems are properly maintained and in good working order. Carefully follow the instructions on all appliances and heating units, taking special care not to overload your electrical system.
- Keep matches, lighters, and candles away from small children. Children are curious about fire and tend to hide when frightened.
- Make an itemized list of your personal property, including furniture, clothing, appliances, and other valuables. If available, make a videotape of your possessions. Keep the list and tape up-to-date and store them along with the other essential documents.

**In Case of Fire in your RV:**

- Assess the problem to assist you in exiting away from the fire source. Know how to use a fire extinguisher.
- Get everyone out of the RV **immediately!**
- **Without risk to any person**, get pets out of the RV.
- Call 9-1-1 or the Fire Department, then call the park office (from a neighbour's phone or a cell phone)

**And:**

1. Give your name, telephone number you are calling from, park address, lot number where the fire is and any helpful directions.
2. Describe the type/nature of the fire (gas, wood, chemical, electrical).
3. State the fire in an RV and report any known injuries.
4. If and only if safe, turn off the propane and disconnect the electricity.
5. If safe, tell all residents or guests near the fire source to stand ready with water hoses to wet down their structures or adjacent building(s) in case of travelling sparks.
6. Make sure all guests have left the affected structure and **immediately** let the fire department personnel know if any disabled person(s) or anyone not accounted for may still be in it.
7. **Never go back into a burning structure.**
8. If smoky conditions are present, remember that smoke rises and stays as close to the floor as possible. Before exiting a door, feel the bottom of the door with the palm of your hand. If it is **hot**, find another way out. **Never open a door that is hot to the touch.**



9. Should your clothing catch fire: **first drop...then roll -- never run!**



**Flood**— Items you should know in the event of a flood.

- Know the elevation of your location relative to nearby streams, rivers, and lakes.
- Have several escape routes planned.
- The Weather Service continuously broadcasts updated weather conditions, warnings, and forecasts. Local broadcast stations transmit Emergency Alert System messages, which may be heard on standard radios.
- When rising water threatens, move your RV to higher ground.
- If one escape route is not passable, do not waste any time—try another route or backtrack to higher ground. Use travel routes specified by local officials. **Stay away from** flooded roadways. **Refrain from bypassing or going** around barricades.
- Wear life preservers if possible. Wear appropriate clothing and **sturdy shoes**.
- Avoid any contact with flood water. Flood water may be contaminated and pose health problems. If cuts or wounds come into contact with flood waters, clean the wound as thoroughly as possible.
- Take your Emergency Disaster Supplies Kit with you. When you reach a safe place, call your predetermined family contact person.

After a flood:

- Return to your RV site **only** after authorities say the danger of more flooding is over.
- If fresh food has contact with flood waters, **throw it out**.
- Only reconnect to water, sewer or electricity once park management has authorized you.

## Right Before a Tornado:

Be sure to act before you see the tornado! If you do nothing else:

1. Listen to local radio or TV stations for the latest information and updates.
2. Move to an underground shelter, basement, or safe room. If none is available, a small, windowless interior room or hallway on the lowest level of a sturdy building is the safest alternative. **Remember: no mobile home or RV area is safe during a tornado!** If you can access a sturdy shelter or a vehicle, immediately fasten your seat belt. Proceed to the nearest safe exit and move away from the tornado.
3. Find a local emergency shelter and know the best routes to get there if needed.



Tornadoes are some of the most feared summer storms and can uproot entire towns in minutes. No matter what type of RV you have, it will not survive a direct hit from a tornado. Therefore, if you are on the path of one of these storms, abandon your RV and go to an approved tornado shelter.

In addition, if you are camping in a wind-prone area, only leave your campsite if you pull. In your awning, remove any popup shelters and items (like camp chairs) that can fly into your neighbour's campsite.

One of the most common sights during a summer afternoon is the gathering of dark storm clouds. Thunderstorms should not be taken lightly as one of the more unpredictable storms. Usually, you will be safe from lightning while inside your vehicle or RV but keep the safety rule in mind. If you see a lightning flash and hear thunder in less than 30 seconds, a strike in your area is highly likely.

Be sure to become familiar with your RV's electrical system and your site hookups. Both your RV and the Park should have a ground that carries any voltage from lightning strikes into the ground. In addition, you will want to purchase a good RV surge protector or guard.

One of the most damaging parts of thunderstorms is hail. Those notorious popcorn or golf ball-sized chunks can smash windows and roof vents and dent your most arduous RV exterior. While you cannot do much about that, be sure to pull over and wait for a hailstorm to stop if you are driving through one.

**NOTE: The bath house will be open and used in the event there is a Tornado/severe storm conditions**

## Individual Emergency Plan for Lot Holders & Guests of RV Heaven

---

*The following is a guideline for guests to develop their unique personal emergency plan.*

### Introduction

We want our guests to have the utmost safety procedures in the unlikely event of a natural or artificial disaster. If you are a transient guest in our park, you will have all the recommended items for a personal emergency plan. Ensure you are familiar with our park's evacuation routes and procedures and discuss them with your family or others at your party.

When a disaster strikes, you may have little time to act. Prepare now for a sudden emergency. Knowing what to do in an emergency is your best protection and responsibility. Learn how to protect yourself and your family by planning.

To obtain more information, you may want to contact your local emergency management agency or Canadian Red Cross chapter - be prepared to take notes.

### *A checklist follows to develop your emergency plan:*

- Find out which disasters are most likely to occur in your visiting areas. Know how to prepare for each disaster and how you would be warned of an emergency.
- Learn about the park's warning signals, what they sound like, and what you should do when you hear them.
- Learn the park's main evacuation routes.
- If needed, ask about special assistance for elderly or disabled persons.
- Ask about animal care during and after an emergency. Animals may not be allowed inside emergency shelters due to health regulations.



### Checklist of Emergency Procedures

Meet with your family and discuss why you need to prepare for disasters. Explain the dangers of fire, severe weather and earthquakes to children, elderly individuals, and persons needing special assistance. Plan to share responsibilities and work together as a team. The following may be used in creating your emergency plan:

- Discuss what to do in an evacuation.
- Pick an alternative meeting location if a family member cannot return to the campsite.
- Pick one out-of-province and one local friend or relative for family members to call if separated by disaster (it is often easier to call out-of-province than within the affected area).
- Instruct family members to turn on a battery-powered radio for emergency information.
- Teach children how and when to call 9-1-1 and a long-distance contact person. Keep family records in a water and fire-proof container.
- If your RV can not be evacuated, turn the propane tanks off.
- Disconnect the RV from power, water, and cable/electric. If you are staying in a Recreation Park
- Know the trailer locations of the main electric fuse box, water service main, and natural gas main shut-off valve. Learn how and when to turn these utilities off.
- Take a basic first aid and CPR class.
- Prepare a disaster supply kit.



### If Disaster Strikes:

- Remain calm and patient. Put your plan into action; call 911.
- Check for injuries; give first aid and get help for seriously injured.
- Listen to your battery-powered radio for news and instructions.
- Evacuate if advised to do so. Wear appropriate clothing and sturdy shoes.
- Check for damage to your RV - use a flashlight only.
- **Do not light matches or turn on electrical switches** if you suspect damage. Check for fires, fire hazards and other household hazards.
- If you remain in your RV, sniff for gas leaks, starting at the water heater. If you smell gas or suspect a leak, turn off the propane tanks, open windows, and get everyone outside quickly.
- Shut off any other damaged utilities.
- Clean up spilled medicines, bleaches, and any other flammable liquids immediately.

### **Remember to:**

- Confine or secure your pets.
- Call your family contact - Do not use the cell again unless it is a life-threatening emergency.
- Check on your neighbours, especially elderly or disabled persons.
- Stay away from downed power lines. Ensure you have an adequate water supply if the service is shut off.

### **First Aid Procedures**

Information on first aid can be found in your local phone book or by contacting the Canadian Red Cross or St John's Ambulance. Utilize known medically trained persons (such as Doctors, Nurses, or people medically trained in CPR and first aid) to assist in administering first aid to those injured.

If the injured individual(s) are in imminent danger, they should be carefully moved to a safe location to administer first aid. In severe cases where movement could cause further injury, **do not move** the injured. Make the injured person(s) as comfortable as possible and wait for emergency personnel.

Prepare a first aid kit before emergencies. Keep it in an easily accessible place and make sure all family members know where it is.

### **Be Prepared!**

Government and Relief Agencies estimate that relief workers could take up to three (3) days to reach some areas after a significant disaster. In such cases, a 72-hour disaster supply kit could mean the difference between life and death.

In other emergencies, a 72-hour disaster supply kit can mean the difference between a miserable experience and a pleasant family campout.

You must have items in an easy-to-carry container, such as a backpack or duffle bag, in the event of an evacuation.

### **Sample First Aid Kit**

- ☐ Sterile adhesive bandages in assorted sizes
- ☐ 2" & 4" sterile gauze pads (4-6 of each size)
- ☐ Hypoallergenic adhesive tape
- ☐ Triangle bandages (3)
- ☐ 2" & 3" sterile roller bandages (3 rolls of each size)
- ☐ Scissors
- ☐ Tweezers
- ☐ Needle
- ☐ Moistened towelettes
- ☐ Antiseptic
- ☐ Thermometer
- ☐ Tongue blades (2)
- ☐ Tube of petroleum jelly or other lubricant
- ☐ Assorted sizes of safety pins
- ☐ Cleansing agent/soap
- ☐ Burn gel & dressings
- ☐ Latex gloves (2 pairs)
- ☐ Sunscreen
- ☐ Aspirin
- ☐ Syrup of Ipecac
- ☐ Activated charcoal (use only if advised by the Poison Control Centre)

### **NOTES:**

**The AED is located at the bathhouse, and a list of competent people is posted on the bulletin board.**



Emergency Contact list: Emergency Response Team

POD ONE - TBD

POD ONE - TBD

POD TWO -Kara Ferguson 1-780-690-9591

POD TWO -TBD

POD THREE- Evelyn Harrod 1-647-231-5659

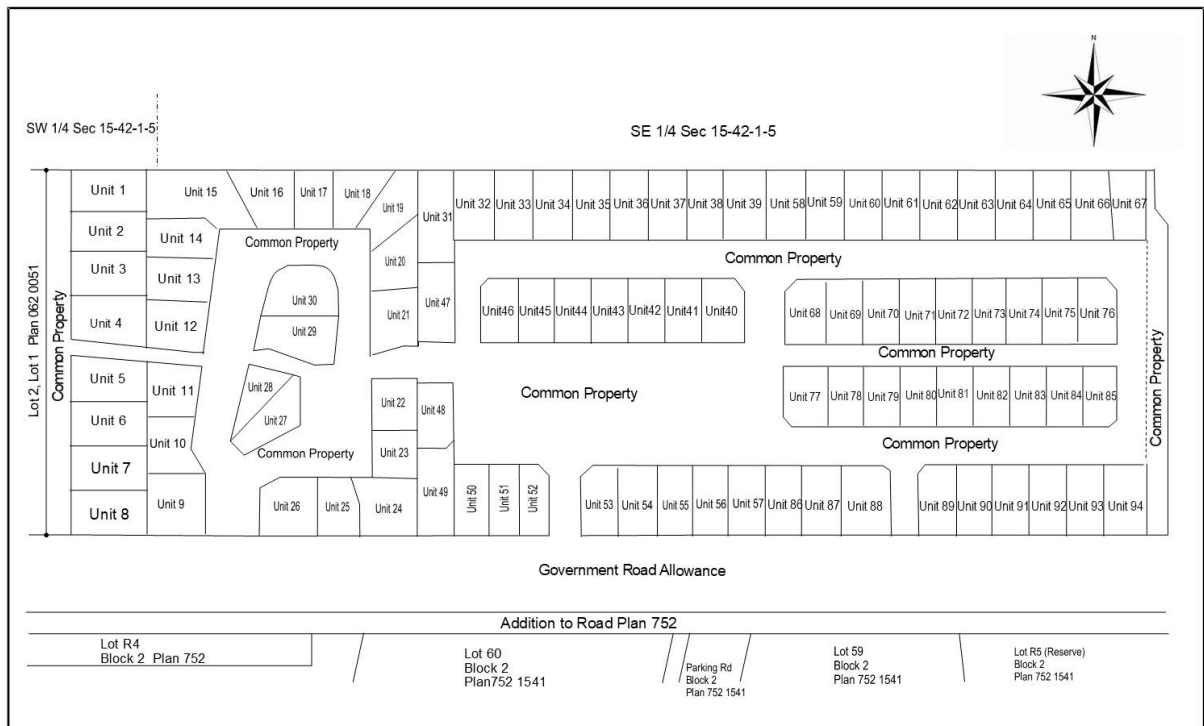
POD THREE -TBD

POD FOUR - TBD

POD FOUR - TBD

Please note that RV Heaven's Emergency response team is neither responsible for physically evacuating residents or guests from their on-site locations nor providing any materials or services during an emergency. This team is developed to assist in the event of an emergency. All owners and guests at RV Heaven must have their own plan in place in the event of an emergency.





X

*Mona Thomas*

Mona Thomas  
Park Manager